

# Habitats Regulations Assessment



## Bodenham Neighbourhood Area

June 2016

## **Contents**

1.0	Introduction	1
2.0	The requirement to undertake HRA of NDPs	2
3.0	Methodology	3
4.0	Results of the initial Screening Report	4
5.0	Description of the Bodenham NDP	6
6.0	Identification of other plans and policies which may have in-combination effects	7
7.0	Assessment of the likely significant effects of the Bodenham NDP	8
8.0	Conclusions from the screening matrix	9

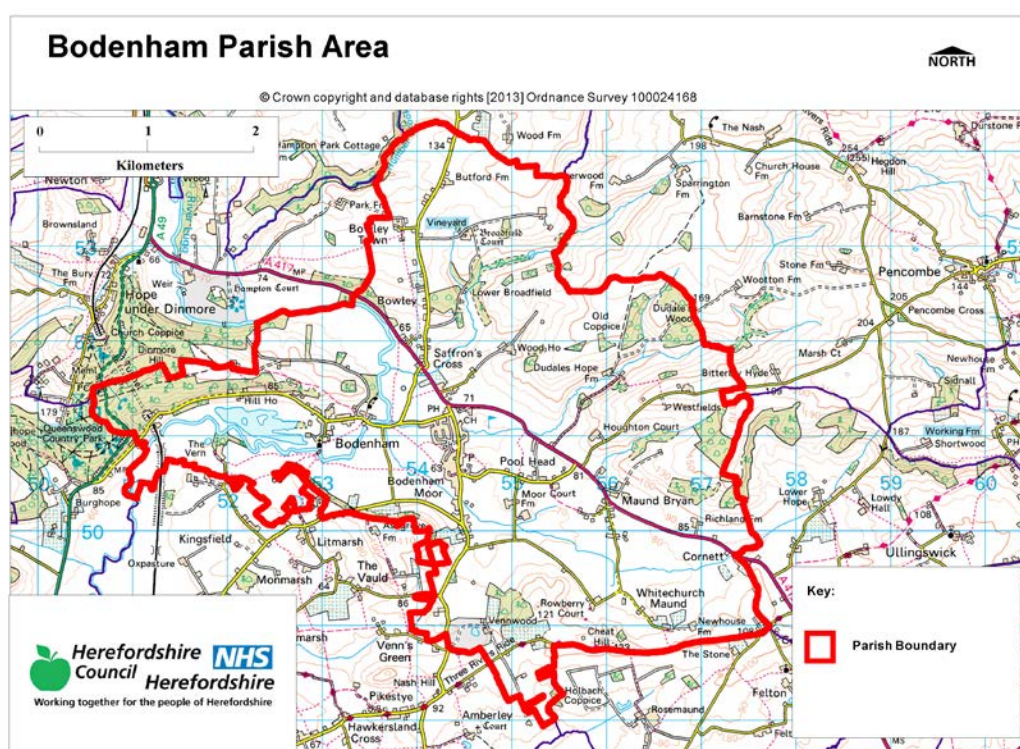
Appendix 1: Initial SEA Screening Report (October 2014)

Appendix 2: Options screening matrix

Appendix 3: Screening of policy matrix

## 1.0 Introduction

- 1.1 This Screening Assessment relates to a Neighbourhood Development Plan (NDP) that is considered to be in general conformity with higher level strategic plans, such as the Herefordshire Local Plan (Core Strategy) and the National Planning Policy Framework. The screening stage involves assessing broadly whether the Draft Bodenham NDP is likely to have a significant effect on any European site(s).
- 1.2 Bodenham Parish Council is preparing an NDP for whole administrative area of the parish, in order to set out the vision, objectives and policies for its development of the Parish up to 2031 (Draft plan May 2016, being assessed).
- 1.3 The NDP includes two settlement boundaries and provides general policies that clarify and add locally specific detail to the policies within the Herefordshire Local Plan (Core Strategy). Therefore it requires a high level screening assessment to build upon the HRA Screening Assessment Report undertaken in respect of strategic policies.
- 1.4 This high level screening assessment, which should be read in conjunction with the adopted Herefordshire Local Plan (Core Strategy) and Habitat Regulations Assessment Report (October 2015), ensures that there will not be any significant impacts upon Natura 2000 sites.
- 1.4 The map below shows Bodenham Neighbourhood Area and parish boundary.



## 2.0 The requirement to undertake Habitats Regulations Assessment of plans

- 2.1 The requirement to undertake HRA of development/neighbourhood plans was confirmed by the amendments to the "Habitats Regulations" published for England and Wales in July 2007 and updated in 2013. Therefore when preparing its NDP, Bodenham Parish Council is required to carry out an assessment known as "Habitats Regulations Assessment" pursuant to Reg 32 Schedule 2 Neighbourhood Planning Regulations.
- 2.2 Article 6(3) of the EU Habitats Directive provides that:

*‘Any plan or project not directly connected with or necessary to the management of the [European] site but likely to have a significant effect thereon, either individually or in combination with other plans or projects, shall be subject to appropriate assessment of its implications for the site in view of the site’s conservation objectives. In the light of the conclusions of the assessment of the implications for the site and subject to the provisions of paragraph 4, the competent national authorities shall agree to the plan or project only after having ascertained that it will not adversely affect the integrity of the site concerned and, if appropriate, after having obtained the opinion of the general public’.*

2.3 HRA is an impact-led assessment and refers to the assessment of the potential effects of a development plan on one or more European sites, including Special Protection Areas (SPAs) and Special Areas of Conservation (SACs):

- **SPAs** are classified under the European Council Directive ‘on the conservation of wild birds’ (79/409/EEC; Birds Directive) for the protection of **wild birds and their habitats** (including particularly rare and vulnerable species listed in Annex 1 of the Birds Directive, and migratory species).
- **SACs** are designated under the Habitats Directive and target **particular habitats** (Annex 1) and/or species (Annex II) identified as being of European importance.
- **Ramsar sites** support internationally important wetlands habitats

2.4 For ease of reference during HRA, general practice has been that these three designations are collectively referred to as either **Natura 2000** or **European sites**. This means that a Screening Assessment is carried out with regard to the Conservation Objectives of the European Sites and with reference to other plans or projects to identify if any significant effect is likely for any European Site.

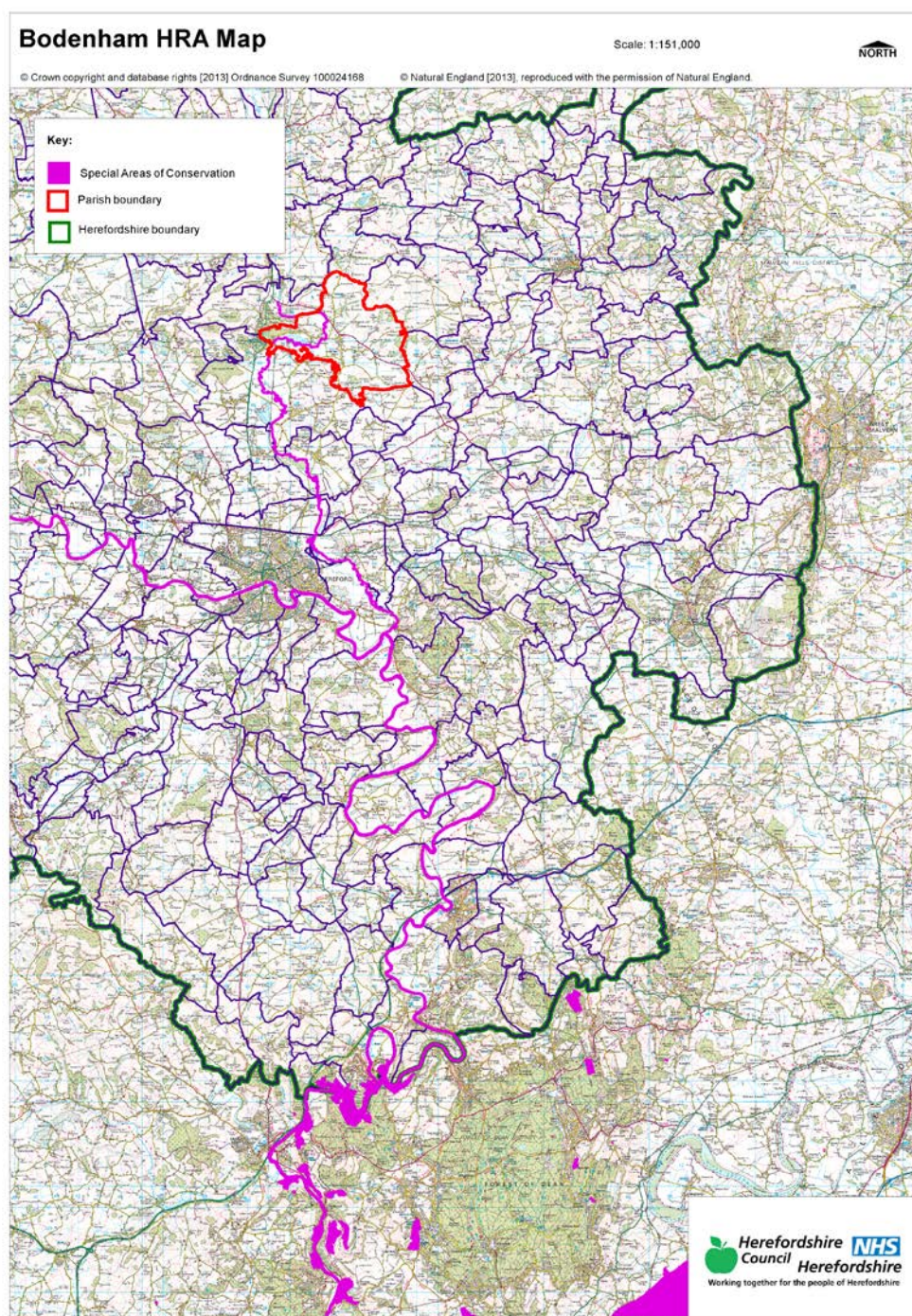
### **3.0 Methodology**

- 3.1 The Bodenham NDP is not directly connected with the management of any European sites, however it does include proposals for development which may affect European sites, it is necessary under Regulation 102(1)(a) of the Habitats Regulations 2010 to undertake screening for likely significant effects on European sites.
- 3.2 The HRA of NDPs is undertaken in stages and should conclude whether or not a proposal or policy in a neighbourhood plan would adversely affect the integrity of the site in question. This is judged in terms of the implications of the plan for a site's 'qualifying features' (i.e. those Annex I habitats, Annex II species, and Annex I bird populations for which it has been designated) and are measured with reference to the conservation objectives for those qualifying features as defined by Natural England.
- 3.3 The first process is to undertake an initial screening report to determine the need to undertake the requirement for a HRA; this initial screening identifies whether the NDP would impact upon any European site that could be within the neighbourhood area or nearby.
- 3.4 If a European Site is within the neighbourhood area or the neighbourhood area could impact upon a European site then this will need to be taken into account and a full screening assessment must be undertaken.
- 3.5 The full screening stage consists of a description of the plan, identification of potential effects on European Sites, assessing the effects on European Sites (taking into account potential mitigation provided by other policies in the plan). In the context of NDPs, the outcome should demonstrate there are no likely effects upon the European sites. If any likely effects occur there will be a need to make amendments to the NDP, which will then have to be re-screened until all likely effects have been mitigated.



## 4.0 Results of the Initial Screening Report and options

- 4.1 The initial Screening Report (September 2014) shown in Appendix 1 revealed that the River Wye (including the River Lugg) SAC is located within the Bodenham neighbourhood area and therefore a full screening assessment would be required.
- 4.2 The following map highlights the location of River Wye (including the River Lugg) SAC in relation to the neighbourhood area.



- 4.3 European sites can be sensitive to changes in water quantity and quality. As outlined within the Habitat Regulation Assessment to the Herefordshire Local Plan (Core Strategy), the water supply in this area comes from Dwr Cymru Welsh Water (DCWW) and no likely significant

effects on European sites as a result of changes in water quality are expected in relation to the proportional growth outlined with the Herefordshire Local Plan (Core Strategy).

- 4.4 In relation to water quality, the Nutrient Management Plan for the River Wye SAC should ensure that developments within the area can be accommodated by existing water discharge permits and would not be likely to have a significant effect upon the River Wye SAC.
- 4.5 For full details of the River Wye's attributes which contribute to and define their integrity and vulnerable data see Appendix 1 of the Bodenham Initial Screening Report (Full report in Appendix 1 of this HRA report).
- 4.6 Options for initial policy choices have been assessed to determine their environmental impact on the River Wye SAC (refer to Appendix 2). In general, the majority of the options concerning new development would appear to depend on location and scale in relation to environmental impact.

## **5.0 Description of the Bodenham NDP**

- 5.1 The Draft Bodenham NDP presents criteria based policies for development in the neighbourhood area, which is equivalent to the administrative parish boundary, up to 2031.
- 5.2 The NDP sets out the vision for the parish over the plan period and 12 objectives for achieving this vision on the ground. These objectives are as follows:
  - 1) To meet Herefordshire Council's adopted Core Strategy's requirement for new housing in the parish over the plan period 2011-2031
  - 2) To identify land for required new development
  - 3) To define the extent and location of built development over the plan period 2011-2031
  - 4) To ensure that new housing meets local needs in terms of size, type and affordability, is well designed and sustainable. Makes best use of existing under and disused land and buildings, and enhances the distinctive rural character and appearance of the parish's main settlements and landscape.
  - 5) To promote measures which will encourage more young people to live in the parish
  - 6) To support new employment proposals where these are of appropriate scale and type, are consistent with the rural character of the parish and do not adversely affect residential amenity.
  - 7) To protect and enhance local community facilities and services and to support the provision of new ones
  - 8) To pursue measures to improve the safety of local roads, to increase the capacity and reliability of local infrastructure systems and to reduce the flood risk to properties in the parish
  - 9) To identify those community needs and infrastructure to be met with the help of development contributions
  - 10) To protect and enhance the local landscape, particularly with regard to the setting of the Bodenham and Bodenham Moor settlements
  - 11) To protect and improve the parish's public right of way and open space, with particular reference to Bodenham Lake and the parish's other designated areas of importance for biodiversity.
  - 12) To encourage renewable energy proposals and resource efficiency in new developments where these do not adversely affect the amenity of local residents or impact on the rural character of the parish landscape or settlement.
- 5.3 The Neighbourhood Plan also sets out 11 general policies on themes based on the objective headings above:
  - Policy BNDP1 Delivering new housing
  - Policy BNDP2 Settlement boundary
  - Policy BNDP3 Mix, type and tenure of new housing development

- Policy BNDP4 Flood risk and drainage
- Policy BNDP5 Employment
- Policy BNDP6 Local community facilities
- Policy BNDP7 Protecting landscape and important public view
- Policy BNDP8 Landscape design principles
- Policy BNDP9 Protection of local character
- Policy BNDP10 Open space
- Policy BNDP11 Renewable energy

## **6.0 Identification of other plans and projects which may have ‘in-combination’ effects**

- 6.1 Regulation 102 of the Habitats Regulations 2010 requires an appropriate assessment where a land use plan (not directly connected with or necessary to the management of the site) is likely to have a significant effect on a European site, either alone or in combination with other plans or projects. It should be noted, however, that NDP cannot be Made (adopted) if likely significant effects occur.
- 6.2 There are a number of potentially relevant plans and projects which may result in in-combination effects with the Herefordshire Local Plan (Core Strategy), and these plans have been reviewed and can be found at Appendix 2 of the Herefordshire Local Plan (Core Strategy) Habitats Regulations Assessment (May 2014).
- 6.3 Whilst the Bodenham NDP does not allocate sites for housing, neither the commitments nor the supporting windfall and settlement boundary policy, as well as its general plan policies would result in greater levels of development than envisaged by strategic policies, as set out in the Herefordshire Local Plan (Core Strategy). Therefore this review is sufficient for the purposes of the NDP. Adjacent seven neighbourhood plans (Wellington, Marden, Withington, Ocle Pychard, Pencombe, Humber, Ford and Stoke Prior and Hope under Dinmore) are at varying stages of their production, but none of the proposals within these plans go over and above the requirements set within the Local Plan (Core Strategy) for their respective neighbourhood areas at this stage.
- 6.4 The HRA for the Local Plan (Core Strategy) also identifies that both the Water Cycle Study for Herefordshire, which indicates the potential for planned water abstraction requirements combined with pressures on European Sites from the plan’s policies, and the work on the Nutrient Management Plan, to ensure the favourable conservation status of the SAC in respect of phosphate levels as soon as possible and at the latest by 2027, have both been considered as part of the in-combination assessment.



## 7.0 Assessment of the 'likely significant effects' of the Bodenham NDP

- 7.1 As required under Regulation 102 of the Habitats Regulations 2010, a Screening Assessment has been undertaken to identify the 'likely significant effects' of the NDP. This involved the preparation of a screening matrix, which determined whether any of the policies and allocations in the NDP would be likely to have a significant effect on the River Wye SAC.
- 7.2 The findings of the screening matrix can be found in Appendix 2 of this report. Colour coding was used to record the likely impacts of the policies (as well as associated site allocations) on the European site and its qualifying habitats and species as shown in the table below.

Red	There are likely to be significant effects
Green	Significant effects are unlikely

- 7.3 The screening matrix took the approach of screening each policy and objective individually, which is consistent with current guidance. The results from the HRA report for the Herefordshire Local Plan (Core Strategy) were also taken into consideration.
- 7.4 Mitigation of some of the identified potential effects could be achieved through implementation of the other policies within the NDP and the Local Plan (Core Strategy), subject to EiP outcome. The Bodenham NDP will safeguard any proposal or development against detrimental impacts on the environment within Policies BNDP4 and BDNP7 in particular.

## 8.0 Conclusions from the Screening Matrix

- 8.1 None of the Bodenham NDP objectives and policies (May 2016) were concluded to be likely to have a significant effect on the River Wye SAC. This conclusion is based on assumptions and information contained within the Bodenham NDP, the HRA for the Local Plan (Core Strategy) and the Herefordshire Local Plan (Core Strategy).
- 8.2 In many cases this is because the policies themselves would not result in development, i.e. they related instead to criteria for development. In several cases the policies also included measures to help support the natural environment including biodiversity and they all have the potential to mitigate some of the possible adverse effects arising from other policies.
- 8.4 Those policies which relate to settlement boundaries where the growth potential growth could occur and could potentially have some impact upon the River Wye SAC, it was determined that some additional policy criteria may be appropriate to ensure safeguards are in place. This is particularly relevant to Bodenham settlement itself, given the proximity of the settlement boundary to the river banks and adjacent to a watercourse that feeds into the river. However, if these policy safeguards are included then due to the scale of growth that is required by the Local Plan (Core Strategy), their proposed growth and commitments at Bodenham Moor, the NDP would not have an appreciable effect on the River Wye SAC.
- 8.5 On that basis no significant effect conclusion could be reached and it is also unlikely that the Bodenham NDP will have any in-combination effects with any plans from neighbouring parishes.
- 8.6 Therefore it is concluded that the **Bodenham NDP will not have a likely significant effect on the River Wye SAC subject to additional suggested policy criteria.**
- 8.7 Any further amendments to the policies (post May 2016) will be re-screened if required and an addendum to this report will be produced.

# Appendix 1

---

**Initial Habitat Regulations Assessment and Strategic Environmental  
Assessment Screening Notification**

**The Neighbourhood Planning (General) Regulation 2012 (Reg. 32)**

**Conservation of Habitats and Species Regulations 2010 (d)**

---

<b>Neighbourhood Area:</b>	Bodenham Neighbourhood Area
<b>Parish Council:</b>	Bodenham Parish Council
<b>Neighbourhood Area Designation Date:</b>	26/04/2013

### **Introduction**

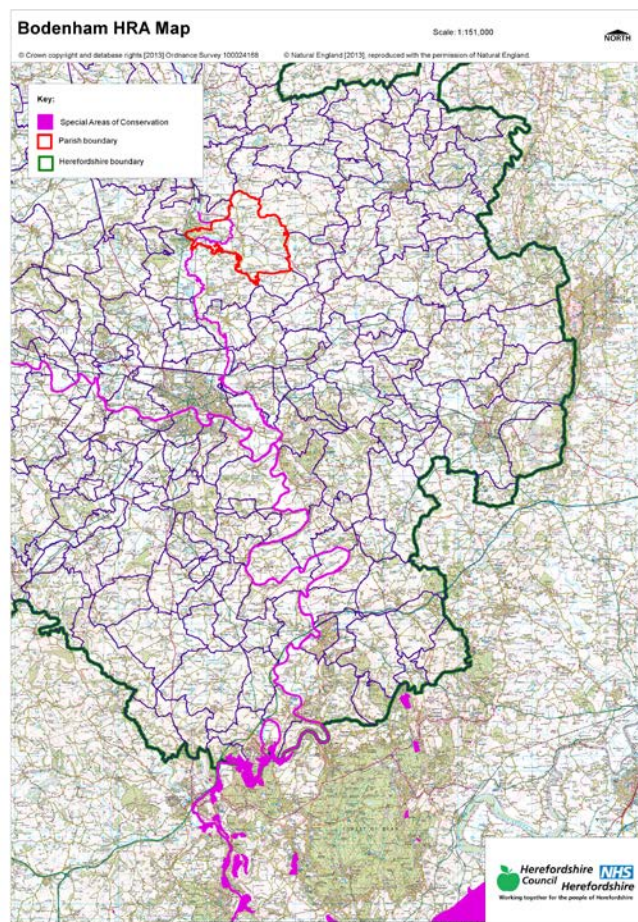
This Initial Habitat Regulations Assessment (HRA) and Strategic Environmental Assessment (SEA) Screening has been undertaken to assess whether any European sites exist within or in proximity to the neighbourhood area which could be affected by any future proposals or policies.

Through continual engagement the outcomes of any required assessments will help to ensure that proposed developments will not lead to Likely Significant Effects upon a European Site or cause adverse impacts upon other environmental assets, such as the built historic or local natural environment.

This document is copyright of Herefordshire Council, please contact the Neighbourhood Planning team if you wish to reuse it in whole or part



## HRA Initial Screening: Map showing relationship of Neighbourhood Area with European Sites (not to scale)



### Initial HRA Screening

#### River Wye (including the River Lugg) SAC:

Does the Neighbourhood Area have the River Wye (including the River Lugg) in or next to its boundary?	Y	The River Lugg is within the borders of the Parish
Is the Neighbourhood Area in the hydrological catchment of the River Wye (including the River Lugg) SAC?	Y	The Parish is within the River Lugg hydrological catchment area
If yes above, does the Neighbourhood Area have mains drainage to deal with foul sewage?	Y	There is some mains drainage at Bodenham

#### Downton Gorge SAC:

Is the Neighbourhood Area within 10km of Downton Gorge SAC?	N	Downton Gorge is 21.8km away from the Parish
---	---	--

**River Clun SAC:**

Does the Neighbourhood Area include: Border Group Parish Council or Leintwardine Group Parish Council?	N	River Clun does not border the Parish
--	---	---------------------------------------

**Usk Bat Sites SAC:**

Is the Neighbourhood Area within 10km of the SAC boundary?	N	Usk Bat Sites are 46.65km away from the Parish
--	---	--

**Wye Valley & Forest of Dean Bat Sites SAC:**

Is the Neighbourhood Area within 10km of any of the individual sites that make up the Wye Valley & Forest of Dean Bat Sites?	N	The Group Parish is 29.94km away from Wye Valley and Forest of dean Bat Sites
--	---	---

**Wye Valley Woodlands SAC:**

Is the Neighbourhood Area within 10km of any of the individual sites that make up the Wye Valley Woodlands Site?	N	The Parish is 35.06km away from the Wye Valley Woodlands
--	---	--

**HRA Conclusion:**

The assessment above highlights that the following European Sites will need to be taken into account in the future Neighbourhood Development Plan for the Bodenham Neighbourhood Area and a Full HRA Screening will be required.

**European Site**

*(List only those which are relevant from above)*

River Wye (including the River Lugg) SAC

## **Strategic Environmental Assessment Initial Screening for nature conservation landscape and heritage features**

The following environmental features are within or in general proximity to the Bodenham Neighbourhood Area and would need to be taken into account within a Strategic Environmental Assessment. In addition, the NDP will also need to consider the other SEA topics set out in Guidance Note 9a to ensure that the plan does not cause adverse impacts.

<b>SEA features</b>	<b>Total</b>	<b>Explanation</b>	<b>SEA required</b>
Air Quality Management Areas	0	There are no AQMA's within the Parish	N
Ancient Woodland	8	Dinmore Hill Wood, The Rookery, Hill Hole Dingle, Dorlas Coppice, Dudales Wood, Westfields Wood, Combs Hill Wood, Venns Wood	Y
Areas of Archaeological Interest	0	There are no AAI's within the Parish	N
Areas of Outstanding Natural Beauty	0	There are no AONB's within the Parish	N
Conservation Areas	1	Bodenham village is a Conservation Area	Y
European Sites	1	The River Lugg SAC flows through the Parish	Y
Flood Areas		Flood Zones 2 & 3 follow the River Lugg and branch out at 3 brooks and flow towards the eastern border of the Parish	Y
Listed Buildings	Numerous	Numerous listed buildings scattered throughout the Parish	Y
Local Sites (SWS/SINCS/RIGS)	8 (SWS)	Gravel Pits at Bodenham, Dinmore Hill and adjoining Woodland, Dorlas Coppice, Dudales Wood and Old Coppice, Woodlands above Ullingswick, Maund Common, Upper Maund Common, Venns Wood	Y
Long distance footpaths/trails	1	Three Rivers Ride	Y
Mineral Reserves	3	Sites to the west and north and 1 central	Y
National Nature Reserve	0	There are no NNR's within the Parish	N
Registered & unregistered parks and gardens	5 Unregistered	The Vern, Bodenham Manor, Vennwood, Broadfield Court, Hampton Court (border)	Y
Scheduled Ancient Monuments	0	There are no SAM's within the Parish	N
Sites of Special Scientific Interest	3	Hill Hole Dingle (Unfavourable Recovering); River Lugg (Unfavourable Recovering); Dinmore Hill Woods (Unfavourable Recovering)	Y

**Decision Notification:**

The initial screening highlights that the Neighbourhood Development Plan for the Bodenham Neighbourhood Area:

- a) Will require further environmental assessment for Habitat Regulations Assessment and Strategic Environmental Assessment.

**Assessment date: 23/05/2013**

**Assessed by: James Latham**



## Appendix 1: European Sites

The table below provides the name of each European Site, which has been screened in for the purposes of neighbourhood planning in Herefordshire; includes their site features of integrity; and vulnerability data. This is based on the sites individual features of integrity and their vulnerabilities, which could include distance criteria. This has been used in identifying which parishes are likely to require a full HRA Screening of their future Neighbourhood Development Plan, to establish if their plan might have Likely Significant Effects on a European Site.

<b>Downton Gorge</b>
<b>Site Features:</b> <i>Tilio-Acerion</i> forests of slopes, screes and ravines
<b>Vulnerability data:</b> 10km for air quality associated with poultry units or other intensive agricultural practices.

<b>River Clun</b>
<b>Site Features:</b> Freshwater pearl mussel <i>Margaritifera margaritifera</i>
<b>Vulnerability data:</b> Water quality is important to maintain the site feature. Parishes either side of the River Clun will be affected.

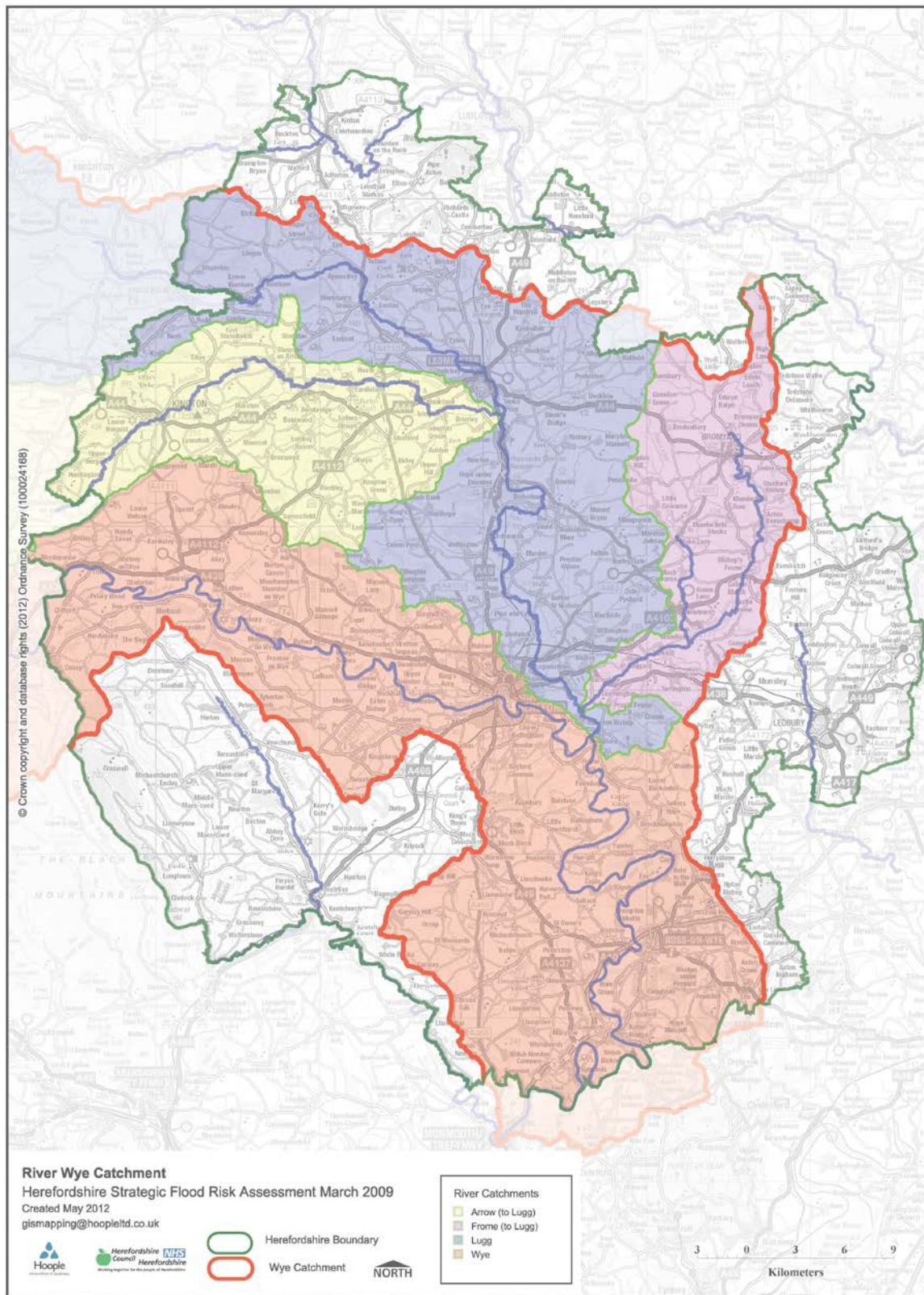
<b>River Wye</b>
<b>Site Features:</b> Water courses of plain to montane levels with the <i>Ranunculion fluitantis</i> and <i>Callitriche-Batrachion</i> vegetation. Transition mires and quaking bogs. White-clawed (or Atlantic Stream) crayfish <i>Austropotamobius pallipes</i> . Sea lamprey <i>Petromyzon marinus</i> . Brook lamprey <i>Lampetra planeri</i> . River lamprey <i>Lampetra fluviatilis</i> . Twaite shad <i>Alosa fallax</i> . Atlantic salmon <i>Salmo salar</i> . Bullhead <i>Cottus gobio</i> . Otter <i>Lutra lutra</i> . Allis shad <i>Alosa alosa</i>
<b>Vulnerability data:</b> Proximity: Developments should not be within 100m of the designated bank. Some developments beyond 100m may also have impacts based on proximity and these issues should be addressed where possible when developing NDP policy and choosing site allocations. Water Quality: Within the whole catchment of the River Wye, which includes the River Lugg, mains drainage issues with regards to water quality are being resolved through the Core Strategy / Local Plan and development of a Nutrient Management Plan. Welsh Water should be consulted to ensure that the proposed growth will be within the limit of their consents. Otters: "An otter will occupy a 'home range', which on fresh waters usually includes a stretch of river as well as associated tributary streams, ditches, ponds, lakes and woodland. The size of a home range depends largely on the availability of food and shelter, and the presence of neighbouring otters. On rivers, a male's home range may be up to 40km or more of watercourse and associated areas; females have smaller ranges (roughly half the size) and favour quieter locations for breeding, such as tributary streams. Otters without an established home range are known as 'transients'. They are mostly juveniles looking for a territory of their own, or adults that have been pushed out of their territories. Transient otters may use an area for a short while, but they will move on if conditions are not suitable or if they are driven away by resident otters. Transients will have been important in extending the range of otters, but they are very difficult to identify from field signs. Within a home range an otter may use many resting sites. These include above-ground shelters, such as stands of scrub or areas of rank grass, and underground 'holts' – for example, cavities under tree roots and dry drainage pipes." (Source: EA website: <a href="http://www.environmentagency.gov.uk/static/documents/Business/Otters_the_facts.pdf">http://www.environmentagency.gov.uk/static/documents/Business/Otters_the_facts.pdf</a> accessed 09/04/2013)

<b>Usk Bat Site</b>
<b>Site Features:</b> Annex I habitats present as a qualifying feature, but not a primary reason for site selection: European dry heaths, Degraded raised bogs still capable of natural regeneration, Blanket bogs, Calcareous rocky slopes with chasmophytic vegetation, Caves not open to the public, <i>Tilio-Acerion</i> forests of slopes, screes and ravines. Annex II species of primary reason for site selection: Lesser horseshoe bat <i>Rhinolophus hipposideros</i> , UK population 5%, although it is suggested this is an underestimate.
<b>Vulnerability data:</b> Lesser Horseshoe bats are known to migrate between 5km and 10km between their summer and winter roosts. The Lesser Horseshoe Bat is vulnerable to disturbance; light pollution; and habitat loss. Check with the planning ecologist for other issues.

<b>Wye Valley and Forest of Dean Bat Sites</b>
<b>Site Features:</b> Annex II species that are a primary reason for site selection: Lesser horseshoe bat <i>Rhinolophus hipposideros</i> . Greater horseshoe bat <i>Rhinolophus ferrumequinum</i>
<b>Vulnerability data:</b> Lesser Horseshoe bats are known to migrate between 5km and 10km between their summer and winter roosts. The Lesser Horseshoe Bat is vulnerable to disturbance; light pollution; and habitat loss. Check with the planning ecologist for other issues.
Greater Horseshoe bats are known to migrate between 20-30km between their summer and winter roosts.
NDPs closest to the European Site will need to consider: Woodland habitat buffer. Lesser Horseshoe Bat: Old buildings; woodland locations; sheltered valleys, extensive deciduous woods or dense scrub, close to roost sites. In areas of fragmented habitats, linear habitats such as hedgerows are important corridors. Vulnerable to loss or disturbance of both summer and winter roosts and removal of linear habitat. Greater Horseshoe Bat: Large buildings, pasture, edge of mixed deciduous woodland and hedgerows. Mixed land-use especially south-facing slopes, favours beetles, moths and insects they feed on. During the winter they depend on caves, abandoned mines and other underground sites for undisturbed hibernation. A system/series of sites required. Vulnerable to loss of insect food supply, due to insecticide use, changing farming practices and loss of broad-leaved tree-cover and loss / disturbance of underground roosts sites.

<b>Wye Valley Woodlands</b>
<b>Site Features:</b> Annex I habitats that are a primary reason for site selection: Beech forests <i>Asperulo-Fagetum</i> , <i>Tilio-Acerion</i> forests of slopes, screes and ravines, <i>Taxus baccata</i> woods of the British Isles. Annex II species present as a qualifying feature, but not a primary reason for site selection: Lesser horseshoe bat <i>Rhinolophus hipposideros</i> , 51-100 residents
<b>Vulnerability data:</b> Lesser Horseshoe bats are known to migrate between 5km and 10km between their summer and winter roosts. The Lesser Horseshoe Bat is vulnerable to disturbance; light pollution; and habitat loss. Check with the planning ecologist for other issues. NDPs closest to the European Site will need to consider: Woodland habitat buffer. Lesser Horseshoe Bat: Old buildings; woodland locations; sheltered valleys, extensive deciduous woods or dense scrub, close to roost sites. In areas of fragmented habitats, linear habitats such as hedgerows are important corridors. Vulnerable to loss or disturbance of both summer and winter roosts and removal of linear habitat.

## Appendix 2: Wye Catchment Map



# Appendix 2



# HRA Report – Bodenham Neighbourhood Plan (May 2016) - HRA Screening of Emerging Neighbourhood Development Plan Options

ManAllDate undertaken: **May 2016**

NDP options	HRA Screening of Emerging NDP options				
	Likely activities (operations) to result as a consequence of the option	Likely effect if option implemented. Could they have Likely Significant Effects (LSE) on European Sites?	European Sites potentially affected	Mitigation measures to be considered, as necessary, through redraft of option and to be considered as part of Appropriate Assessment	Could the policy have likely significant effects on European sites (taking mitigation into account?)
Option 1 Do nothing	Not producing a neighbourhood plan would result in any future growth decisions within the parish being made based on the strategic policies within the Core Strategy.  Proportional housing and employment growth in accordance with the Core Strategy.	Core Strategy HRA has examined the likely significant effects of the Core Strategy rural policies in May 2014 and April 2015 and concluded that there are no LSE but acknowledges the role of neighbourhood plans to provide additional certainty.	River Wye (including River Lugg) SAC.  The River Wye SAC itself does pass through the parish as the River Lugg is in the north west of the parish.	n/a	n/a
Option 2 Allocate sites for housing	Allocation of sites for housing or other uses would give certainty to future development. Specific environmental issues could be investigated during the site search and be positively addressed within the policy wording.	Pursuing this option would give greater certainty over future development within the area particularly within the River Wye catchment. If required mitigation criteria can be added to site allocations policies to ensure no likely significant effect would occur	River Wye (including River Lugg) SAC	n/a	No; policy criteria can be added to any allocation policy to mitigate.

# HRA Report – Bodenham Neighbourhood Plan (May 2016) - HRA Screening of Emerging Neighbourhood Development Plan Options

		This was not considered an option due to existing commitments in the parish			
Option 3 Manage future housing using a settlement boundary	The designation of a settlement boundary will give additional certainty and help define those areas considered as the built form and open countryside. This can aid the direction of further growth to maintain the quality of the landscape and surroundings. There is less certainty as any growth will be adjudged by criteria based policy.	Any settlement boundary would need to be designated to ensure that sufficient capacity was included to permit the proportional growth requirements within Policy RA2 of the Core Strategy. Criteria would need to be included within the policy to safeguard against any likely effects.	River Wye (including River Lugg) SAC	n/a	No; policy criteria can be added to any settlement boundary criteria policy to mitigate.
Option 4 Allocate site and identify a settlement boundary	Allocation of sites for housing or other uses would give certainty to future development. Specific environmental issues could be investigated during the site search and be positively addressed within the policy wording. The designation of a settlement boundary will give additional certainty and help define those	Pursuing this option would give greater certainty over future development within the area particularly within the River Wye catchment. If required mitigation criteria can be added to site allocations policies.	River Wye (including River Lugg) SAC	n/a	No; policy criteria can be added to any allocation policy to mitigate.

HRA Report – Bodenham Neighbourhood Plan (May 2016) - HRA Screening of Emerging Neighbourhood Development Plan Options

	areas considered as the built form and open countryside				
Option 5  Allocations for new businesses	Potential Physical disturbance depending upon location and type of employment  Increased traffic levels	Good practice techniques for construction may help to eliminate disturbance during construction phases.  Ensure future policy balances out the scale of promoted schemes and avoid the location to close to the River Wye SAC	River Wye (including River Lugg) SAC	Impact would depend upon location and scale. Need to ensure sufficient safeguards are in place to prevent significant effect occurring.	Potential Physical disturbance depending upon location and type of employment  Increased traffic levels
Option 6  Criteria for small scale business development and home working	Potential Physical disturbance depending upon location and type of employment  Increased traffic levels	Good practice techniques for construction may help to eliminate disturbance during construction phases.  Ensure future policy balances out the scale of promoted schemes and avoid the location to close to the River Wye SAC	River Wye (including River Lugg) SAC	Impact would depend upon location and scale. Need to ensure sufficient safeguards are in place to prevent significant effect occurring.	Potential Physical disturbance depending upon location and type of employment  Increased traffic levels
Option 7 Housing in Bodenham Moor only	Allocation of sites for housing or other uses would give certainty to future development. Specific environmental issues could be investigated during the site search and be positively addressed within the policy wording.	Pursuing this option would give greater certainty over future development within the area particularly within the River Wye catchment and its flood plain within the village.  Any fluvial or surface water issues and water	River Wye (including River Lugg) SAC	n/a	No; policy criteria can be added to any allocation policy to mitigate.

HRA Report – Bodenham Neighbourhood Plan (May 2016) - HRA Screening of Emerging Neighbourhood Development Plan Options

		quality issues will need to be addressed within the resulting policy criteria.			
Option 8 Housing in Bodenham only	Allocation of sites for housing or other uses would give certainty to future development. Specific environmental issues could be investigated during the site search and be positively addressed within the policy wording.	<p>Pursuing this option would give greater certainty over future development within the area particularly within the River Wye catchment.</p> <p>Although the majority of the village is outside the flood plain, parts are close to the River itself.</p> <p>Any fluvial or surface water issues and water quality issues will need to be addressed within the resulting policy criteria particularly if within 100m of the river itself.</p>	River Wye (including River Lugg) SAC	n/a	No; policy criteria can be added to any allocation policy to mitigate.
Option 9 Housing in both settlements	Allocation of sites for housing or other uses would give certainty to future development. Specific environmental issues could be investigated during the site search and be positively addressed within the policy wording.	<p>Pursuing this option would give greater certainty over future development within the area particularly within the River Wye catchment.</p> <p>Any fluvial or surface water issues and water quality issues will need to be addressed within the resulting policy criteria particularly if within 100m of the river itself.</p>	River Wye (including River Lugg) SAC	n/a	No; policy criteria can be added to any allocation policy to mitigate.

HRA Report – Bodenham Neighbourhood Plan (May 2016) - HRA Screening of Emerging Neighbourhood Development Plan Options

		Public preference for this option			
--	--	-----------------------------------	--	--	--

# Appendix 3



NDP objectives	HRA Screening of NDP objectives and policies				
	Likely activities (operations) to result as a consequence of the objective/policy	Likely effect if objective/policy implemented. Could they have Likely Significant Effects on European Sites?	European Sites potentially affected	Mitigation measures to be considered, as necessary, through redraft of objective/option/policy.	Could the policy have any likely significant effects on European sites (taking mitigation into account)?
<b>NDP Policies</b>					
Objective 1 Housing requirements	Objective to support the delivery of proportional growth in line with Local Plan (Core Strategy) Policy RA1 / RA2	none	River Wye (including the River Lugg) SAC	none	No, this criteria will not lead to development, rather it acknowledges that proportional growth will occur across the neighbourhood area in line with the Local Plan (Core Strategy)
Objective 2 and 3 Settlement boundaries	Objective to support the delivery of proportional growth in line with Local Plan (Core Strategy) Policy RA1/ RA2.	none	River Wye (including the River Lugg) SAC	Policy criteria will need to include reference to the proximity of the River Wye (including River Lugg) SAC particularly within the Bodenham village area	No, additional policies within the plan will provide the detail regarding the location and the extent of the settlement boundaries.
Objective 4 Criteria for new housing	Set design criteria for future housing development and encourage affordable housing	none	River Wye (including the River Lugg) SAC	none	No, this objective indicates the style and type new development rather than the location.
Objective 5 and 6 Jobs	More people will be encouraged to work closer to their work. The plan will attract employment opportunities that are suitable for a rural area.	none	River Wye (including the River Lugg) SAC	none	No, although additional reference to not adverse effect on the environment as well as residential amenity will help strengthen the objective. Further policy safeguard and criteria will be included within the policies of the plan.
Objective 7, 8 and 9 Local services and infrastructure	Protection for community facilities, improved network safety and identify infrastructure	none	River Wye (including the River Lugg) SAC	none	No, this objective is seeking to safeguard community facilities and highlight infrastructure improvements via developer contributions.
Objective 10 and 11 Open spaces and the environment	Protect and enhance the existing natural environment, and local heritage assets within the Parish.	none	River Wye (including the River Lugg) SAC	none	No, this objective is seeking to protect area of open space and the environment. Areas designated for their biodiversity are specific mentioned within the policy
Objective 12 Renewable energy	Encourage small scale energy proposals	none	River Wye (including the River Lugg) SAC	none	No, this objective seeks to encourage small scale renewable scheme.

NDP objectives	HRA Screening of NDP objectives and policies				
	Likely activities (operations) to result as a consequence of the objective/policy	Likely effect if objective/policy implemented. Could they have Likely Significant Effects on European Sites?	European Sites potentially affected	Mitigation measures to be considered, as necessary, through redraft of objective/option/policy.	Could the policy have any likely significant effects on European sites (taking mitigation into account)?
Policy BNDP1 Delivering new housing	Policy to support the delivery of proportional growth in line with Local Plan (Core Strategy) Policy RA1.	Housing, infrastructure development and possible increase in recreational activities, vehicular movements and demand for water abstraction and treatment. Uncertain as to the impacts upon the River Wye SAC dependent on the location of development.	River Wye (including the River Lugg) SAC	<p>Improved water efficiency measures, metering and addressing leakages in supply may help to mitigate any additional pressure placed on the water supply as a result of new developments.</p> <p>The implementation of Policies SD3 and SD4 within the Local Plan (Core Strategy) should help to avoid adverse impacts in relation to hydrological regimes at the River Wye.</p> <p>Water quality in the River Wye SAC is also specifically addressed through the Nutrient Management Plan produced by Natural England and the Environment Agency.</p>	No: this policy would allow for proportional levels of growth and supports the Local Plan (Core Strategy) Policy RA1/RA2. Alternative policies within the NDP provide criteria safeguards.
Policy BNDP2 Settlement boundaries	Policy to define settlement boundaries for both Bodenham and Bodenham Moor. This will be the focus for growth.	<p>Housing, infrastructure development and possible increase in recreational activities, vehicular movements and demand for water abstraction and treatment. Uncertain as to the impacts upon the River Wye SAC dependent on the location of development.</p> <p>The settlement boundary for Bodenham is relatively close to the River Lugg</p>	River Wye (including the River Lugg) SAC	<p>Improved water efficiency measures, metering and addressing leakages in supply may help to mitigate any additional pressure placed on the water supply as a result of new developments.</p> <p>The implementation of Policies SD3 and SD4 within the Local Plan (Core Strategy) should help to avoid adverse impacts in relation to hydrological regimes at the River Wye.</p> <p>Water quality in the River Wye SAC is also specifically addressed through the Nutrient Management Plan produced by Natural England and the Environment Agency.</p>	Particular reference to the River Wye (including the River Lugg) within the policy criteria would help strengthen the policy. Particularly with regards to the settlement boundary for Bodenham which is in close proximity to the river.

NDP objectives	HRA Screening of NDP objectives and policies				
	Likely activities (operations) to result as a consequence of the objective/policy	Likely effect if objective/policy implemented. Could they have Likely Significant Effects on European Sites?	European Sites potentially affected	Mitigation measures to be considered, as necessary, through redraft of objective/option/policy.	Could the policy have any likely significant effects on European sites (taking mitigation into account)?
Policy BNDP3  Mix, type and tenure of new housing development	Policy to provide small scale affordable housing in appropriate locations	<p>Housing, infrastructure development and possible increase in recreational activities, vehicular movements and demand for water abstraction and treatment. Uncertain as to the impacts upon the River Wye SAC dependent on the location of development.</p> <p>The settlement boundary for Bodenham is relatively close to the River Lugg</p>	River Wye (including the River Lugg) SAC	<p>Improved water efficiency measures, metering and addressing leakages in supply may help to mitigate any additional pressure placed on the water supply as a result of new developments.</p> <p>The implementation of Policies SD3 and SD4 within the Local Plan (Core Strategy) should help to avoid adverse impacts in relation to hydrological regimes at the River Wye.</p> <p>Water quality in the River Wye SAC is also specifically addressed through the Nutrient Management Plan produced by Natural England and the Environment Agency.</p>	No, with the addition of criteria in the other policies of the plan. This policy supports the principle of policy H2 of the Core Strategy. Policy safeguards exist within other policies of the plan.
Policy BNDP4  Flood risk and drainage	Policy to indicate the requirements relations to flood management in development proposals.	No, this will not lead to development indicates the details required for applications	River Wye (including the River Lugg) SAC	n/a	No, this policy will not lead to development but indicates the details required for development proposals. This will result in managed flood risk for the parish

NDP objectives	HRA Screening of NDP objectives and policies				
	Likely activities (operations) to result as a consequence of the objective/policy	Likely effect if objective/policy implemented. Could they have Likely Significant Effects on European Sites?	European Sites potentially affected	Mitigation measures to be considered, as necessary, through redraft of objective/option/policy.	Could the policy have any likely significant effects on European sites (taking mitigation into account)?
Policy BNDP5 Employment	Small scale employment facilities including live work and working from home	Employment and infrastructure development.  Possible vehicular movements and demand for water abstraction and treatment.	River Wye (including the River Lugg) SAC	<p>The Core Strategy policy LD2 will aim to help avoid any adverse impacts on the River Wye SAC for new employment or businesses uses.</p> <p>Improved water efficiency measures, metering and addressing leakages in the supply may help to mitigate any additional pressures on the water supply as a result of new development.</p> <p>Measures within Core Strategy policy SD1 should help to mitigate potential impacts relating to non-physical disturbances.</p> <p>The implementation of Core Strategy policies SD3 and SD4 should also help to avoid any adverse impacts in relation to the hydrological regimes at the River Wye. Water Quality in the River Wye is also being specifically addressed through the Nutrient Management Plan.</p> <p>This NDP policy should help to reducing the extent to which people need to travel to work especially in connection with policies to improve network connections.</p>	Additional policy criteria could be added to strengthen the avoidance locations which could have an adverse impact on the natural environment especially River Wye SAC

NDP objectives	HRA Screening of NDP objectives and policies				
	Likely activities (operations) to result as a consequence of the objective/policy	Likely effect if objective/policy implemented. Could they have Likely Significant Effects on European Sites?	European Sites potentially affected	Mitigation measures to be considered, as necessary, through redraft of objective/option/policy.	Could the policy have any likely significant effects on European sites (taking mitigation into account)?
Policy BNDP6 Local community facilities	Protection of existing community facilities, promotion of choice of transport modes and indication of developer contributions	none	River Wye (including the River Lugg) SAC	none	No, the policy is seeking to retain existing or co-locate new facilities.
Policy BNDP7 Protecting landscape and important public views	Protection of landscape setting and views	none	River Wye (including the River Lugg) SAC	none	No, this policy will not lead to development, it is intended to protect landscape character and setting and ensure these are addressed in development proposals
Policy BNDP 8 Landscape design principles	Elements of landscape feature which should be considered in development proposals	none	River Wye (including the River Lugg) SAC	none	No this policy will not lead to development, it is intended to protect landscape character and setting and ensure these are addressed in development proposals
Policy BNDP9 Protection of local character	Elements of local character which should be considered in development proposals	none	River Wye (including the River Lugg) SAC	none	No this policy will not lead to development, it is intended to protect the local character and setting and ensure these are addressed in development proposals.  <b>Additional reference to the River Wye (including the River Lugg) SAC within the first criteria would help to strengthen the policy</b>
Policy BNDP10 Open space	Protection of open space and local green space	none	River Wye (including the River Lugg) SAC	none	No, this policy will not lead to development but seek to protect existing open spaces and green areas.
Policy BNDP 11 Renewable energy	Promotion of small scale renewable energy schemes	Depending on type and location of infrastructure;  Physical damage or disturbance  Non-physical disturbance such as noise	River Wye (including the River Lugg) SAC	Measures included within policy SD2 of the Core Strategy should help to mitigate potential impacts relating to non-physical disturbances.  Good practice construction techniques including noise suppression measures, hours of operation may help to mitigate potential adverse effects during construction.	No; this policy could result in the development of renewable energy infrastructure which depending on location could have potential effect on the River Wye SAC. However, sufficient policy safeguards are in place within the Core Strategy and with the inclusion of additional wording within the Bodenham NDP policy to avoid or mitigate any likely significant effects on the River Wye